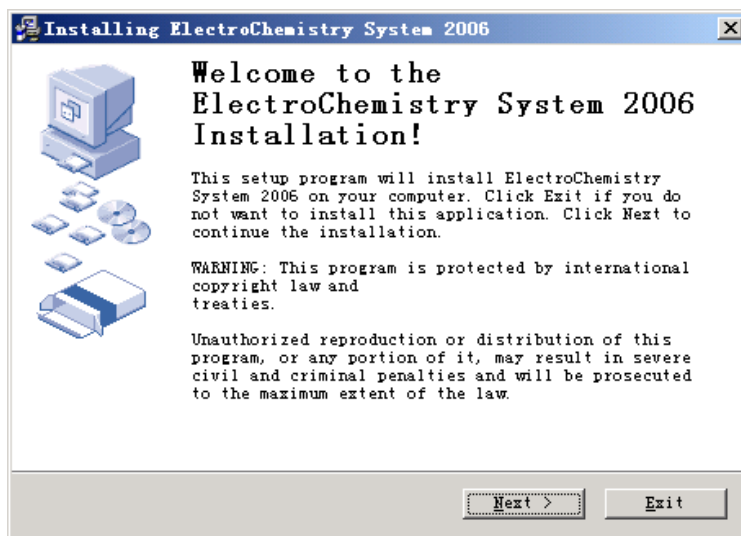
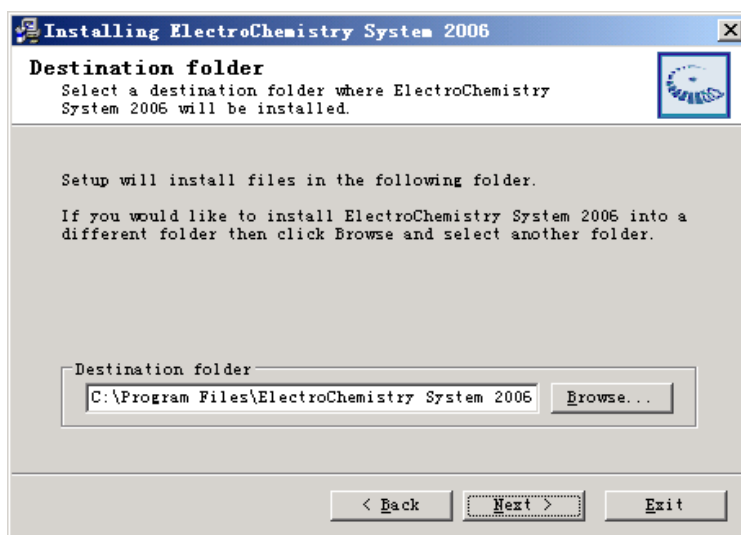


ECS 程序及 uECS 驱动安装详细步骤:

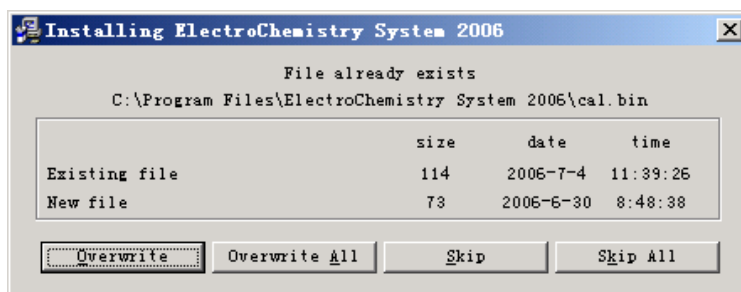
运行 ECSSETUP.EXE:



点击'Next'



如果出现这个窗口, 点击'Overwrite All'



点击'Finish'



后台会弹出驱动安装窗口,如果停在如下画面:

```
ca\C:\WIN2003\system32\cmd.exe
C:\Program Files\PLAB Multipurpose Analog Interface v0.3>copy windrvr6.sys C:\WIN2003\system32\drivers
已复制      1 个文件。

C:\Program Files\PLAB Multipurpose Analog Interface v0.3>copy windrvr6.inf C:\WIN2003\inf
已复制      1 个文件。

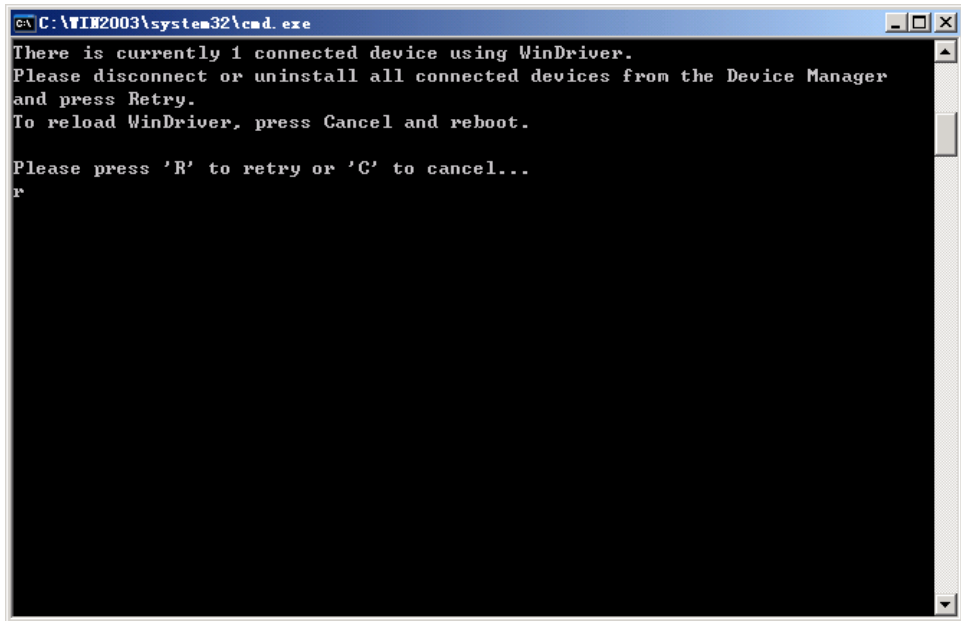
C:\Program Files\PLAB Multipurpose Analog Interface v0.3>copy uecs.inf C:\WIN2003\inf
已复制      1 个文件。

C:\Program Files\PLAB Multipurpose Analog Interface v0.3>wdreg install
Error: You need to use one of the following flags: -inf / -name / -uxd.
For detailed usage information, run "wdreg".

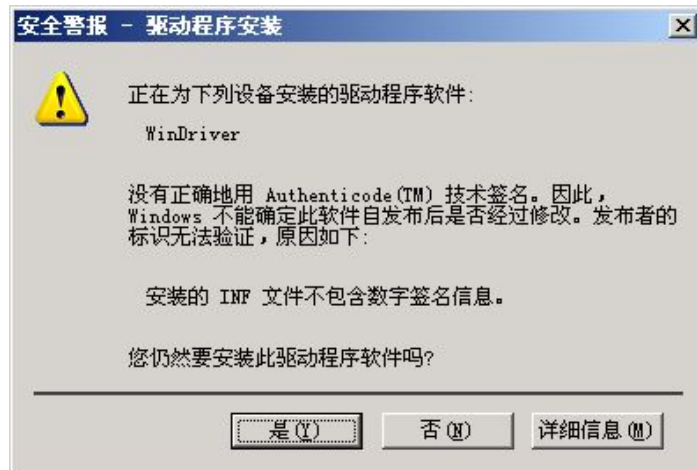
C:\Program Files\PLAB Multipurpose Analog Interface v0.3>wdreg -inf C:\WIN2003\inf\windrvr6.inf install
There is currently 1 connected device using WinDriver.
Please disconnect or uninstall all connected devices from the Device Manager
and press Retry.
To reload WinDriver, press Cancel and reboot.

Please press 'R' to retry or 'C' to cancel...
```

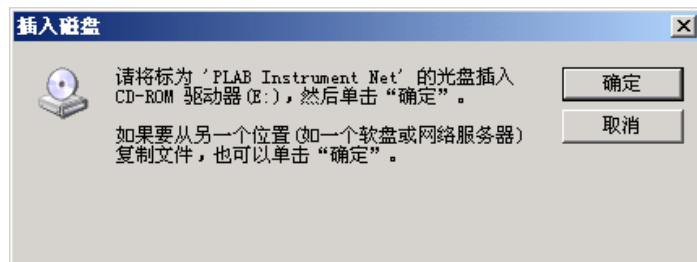
则先断开连接的仪器, 然后输入'R':



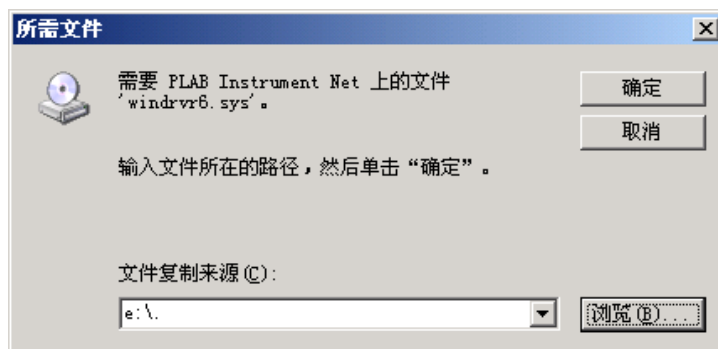
弹出如下窗口,点击'是'



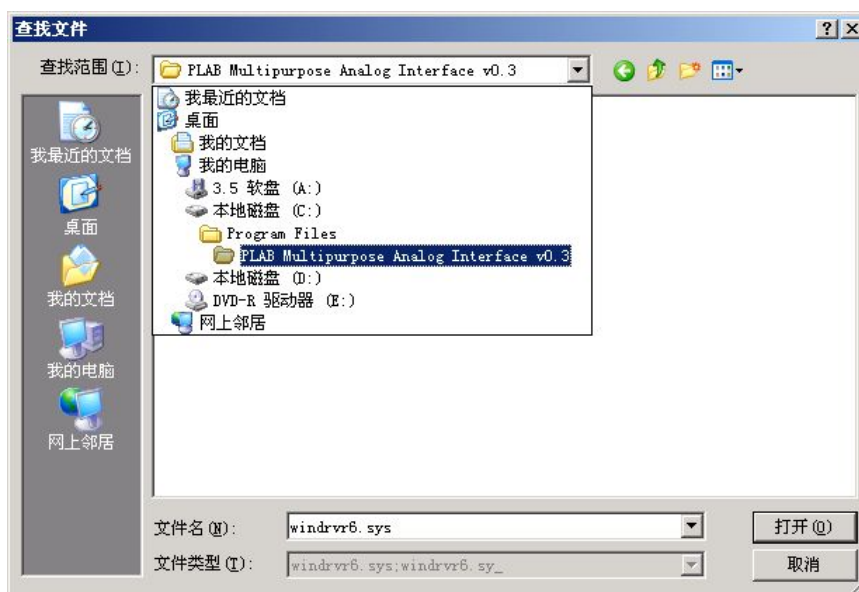
点击确定



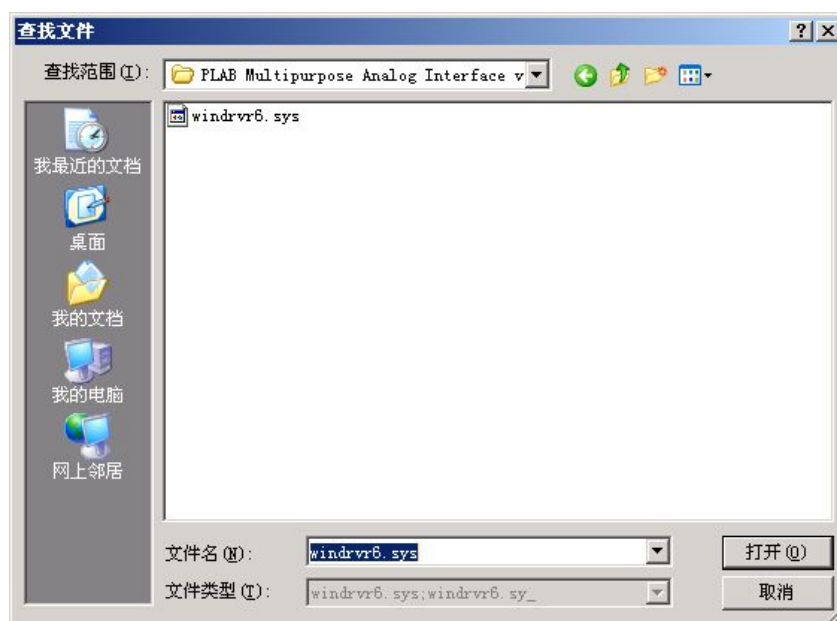
点击浏览



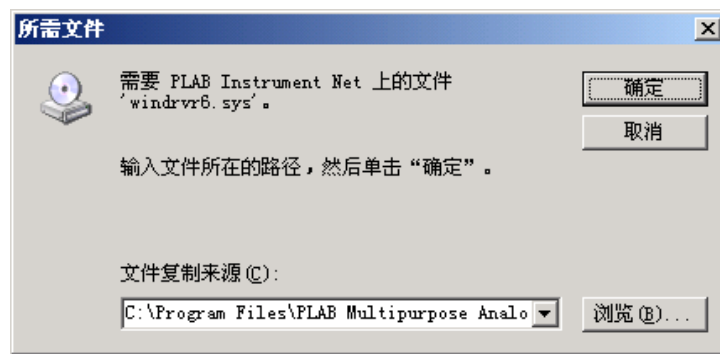
选择如下目录



点击'打开'

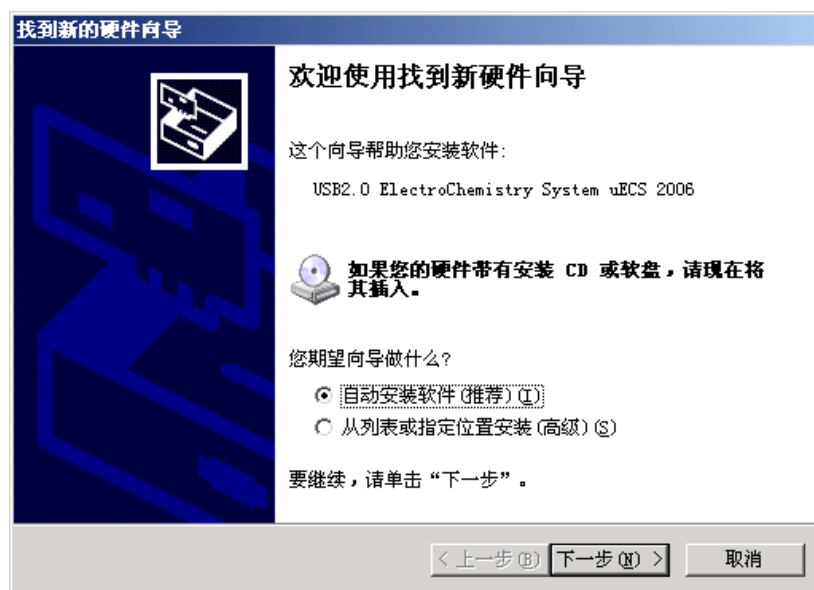


点击‘确定’



底层驱动安装完成.

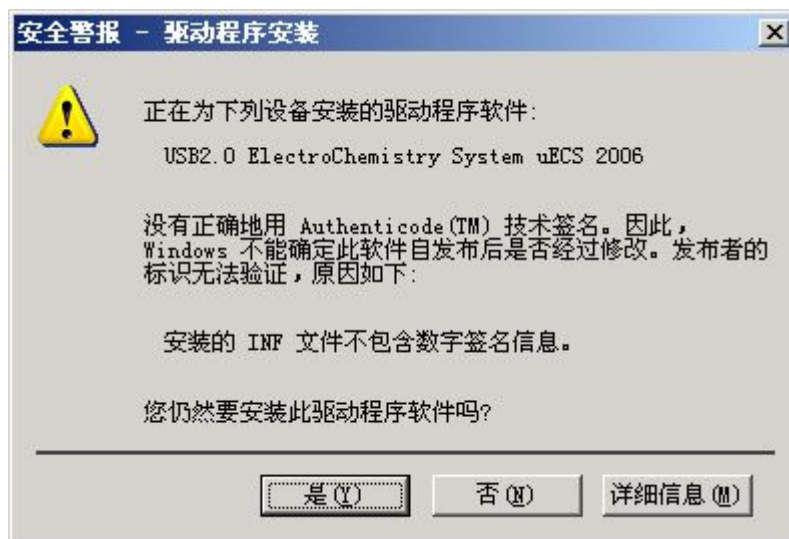
然后将 uECS 插入机器 USB 口,会自动弹出如下窗口,点击下一步



等待



点击'是'

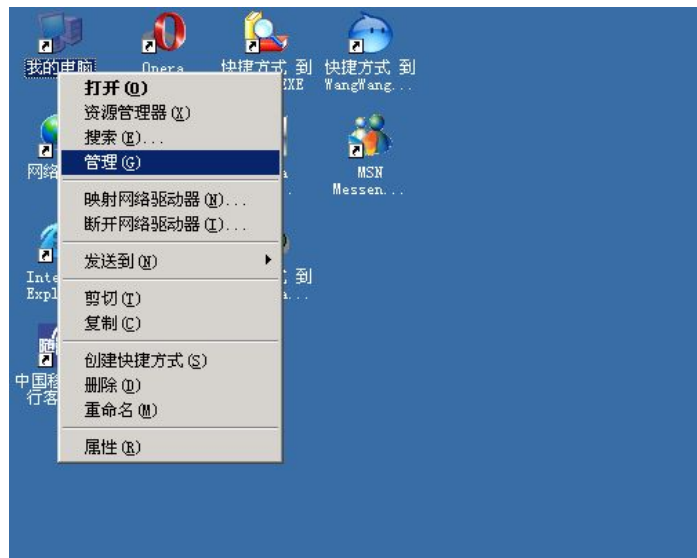


点击'完成'



检验驱动安装成功的办法:

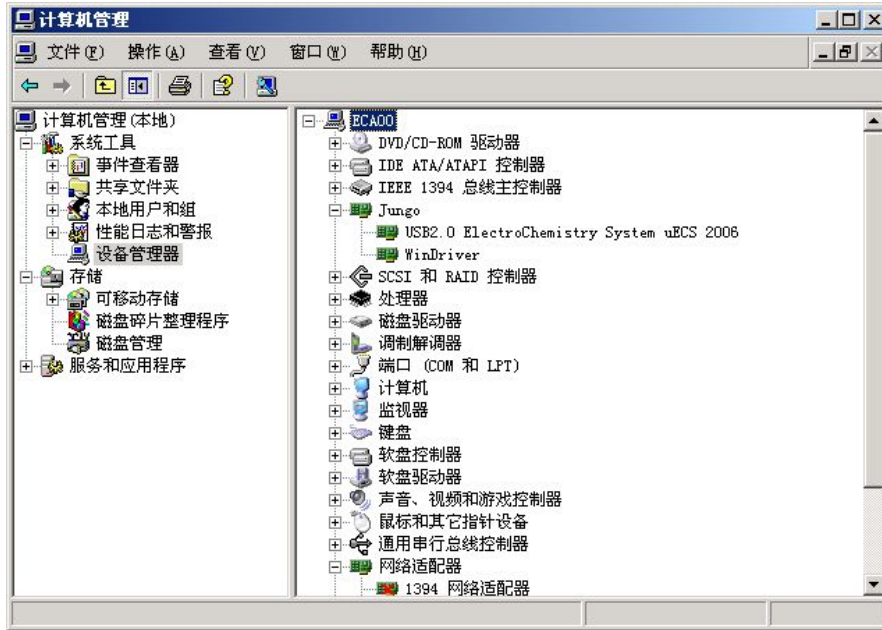
鼠标右键点击'我的电脑',再点'管理'



点'设备管理器'



点'Jungo'前的+号



如果出现 USB2.0 ElectroChemistry System uECS 2006 和 WinDriver 二项则表示驱动安装成功